



Horsham
District
Council

Climate Change and Nature

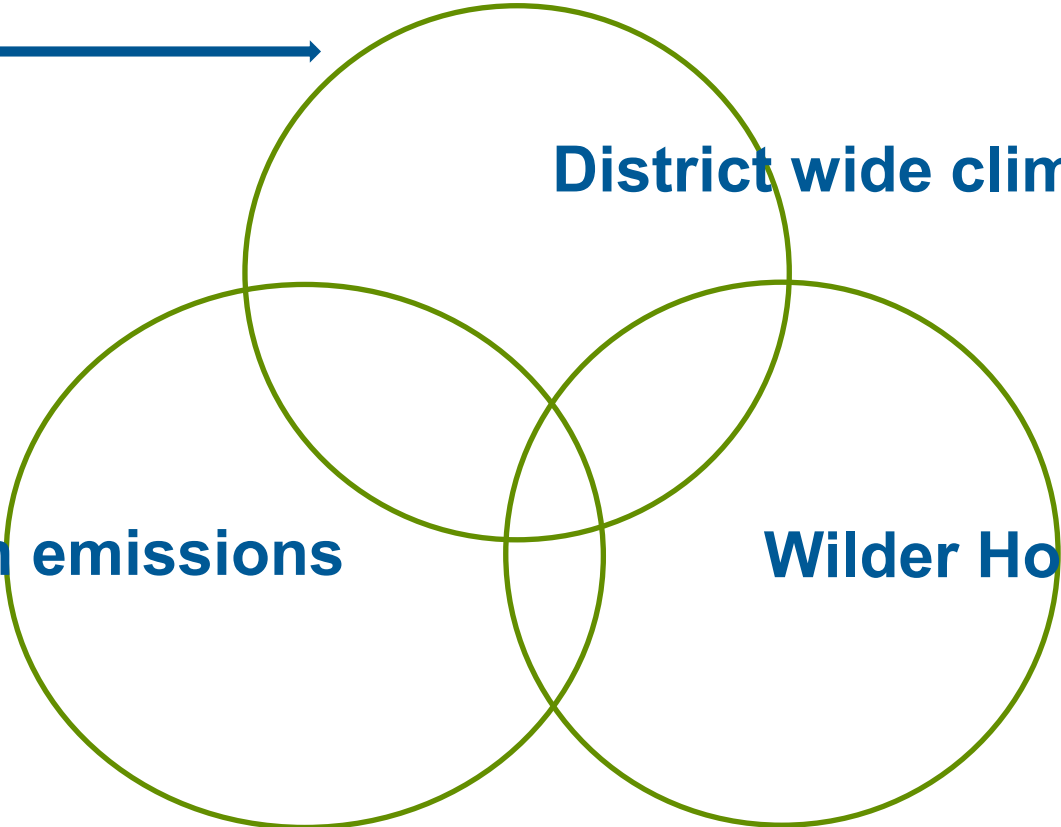
26th July 2023

Helen Peacock

Climate Change & Nature Recovery Programme



Community Climate Fund



District wide climate action

Reduce HDC's carbon emissions

Wilder Horsham District

- Partnership - Sussex Wildlife Trust & HDC
- 5 year project; commenced 2020
- Project team based at the Trust
- Most costs covered by HDC
- Strong links between project team & HDC
- Overseen by a Steering Group



Richard Black (Senior Landowner Advisor)
Chloe Harrison (Project Support Officer)
Steve Tilman (Landowner Advisor) – not pictured

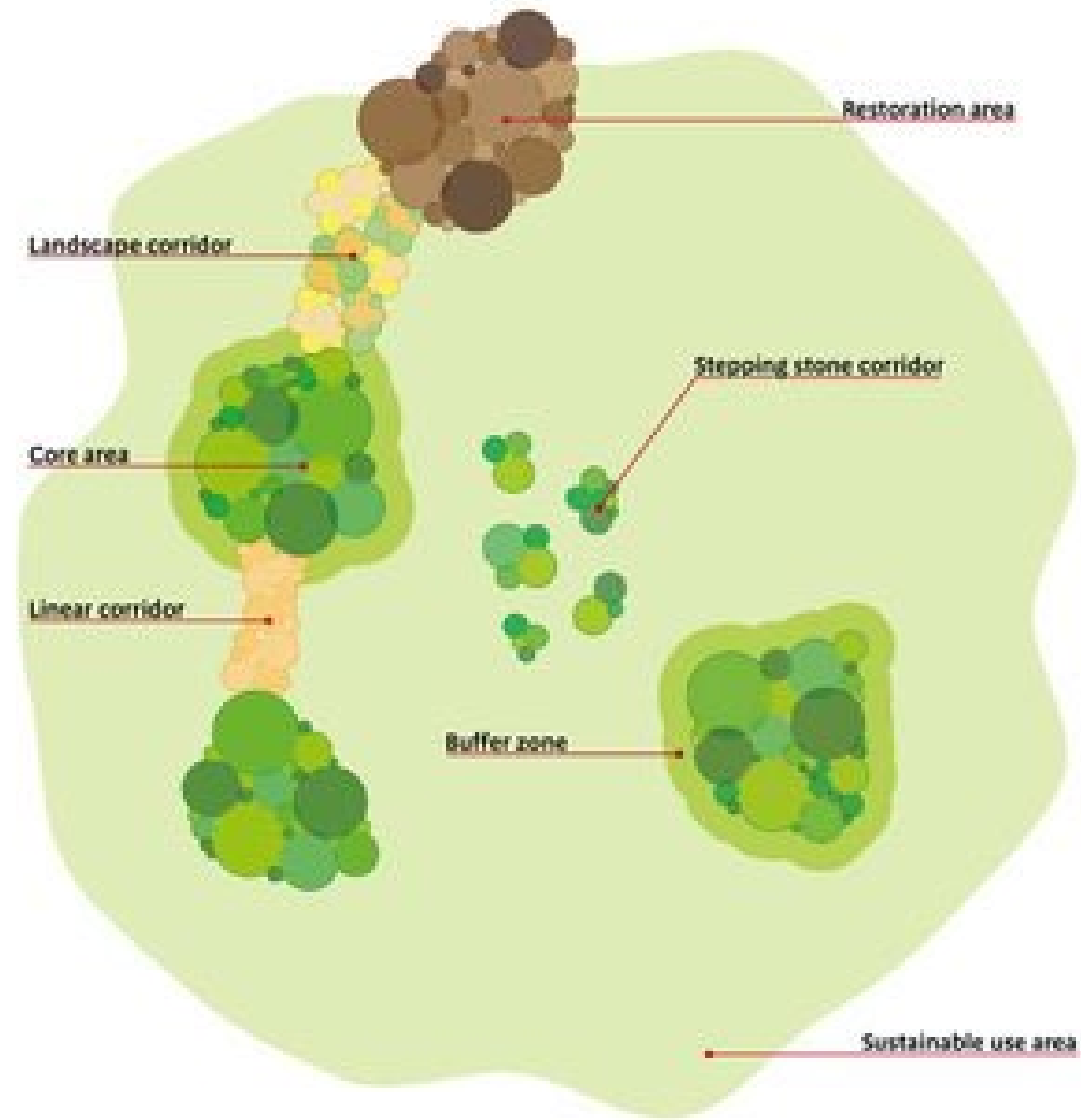
Help **wildlife thrive** across the District

Create networks of land that is protected and enhanced for wildlife, to allow habitats to expand and for species populations to increase, which will ensure that they are more resilient to change

Increase awareness of actions that communities can take to improve their local natural environment and the benefits that wildlife provides

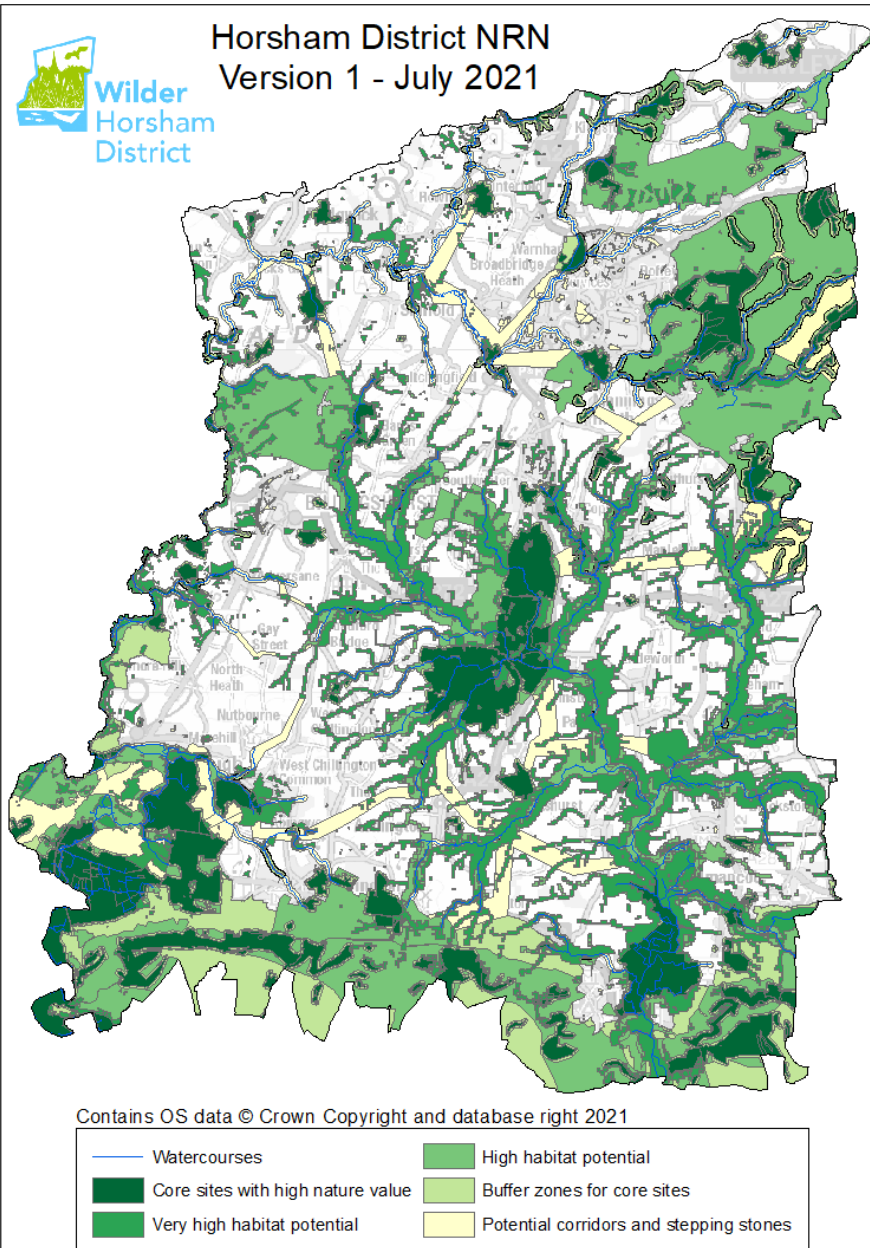
Maximise the opportunities that protecting and enhancing wildlife brings for **climate change mitigation and adaptation**

Bigger
Better
More
Joined up





Horsham
District
Council



Rivers

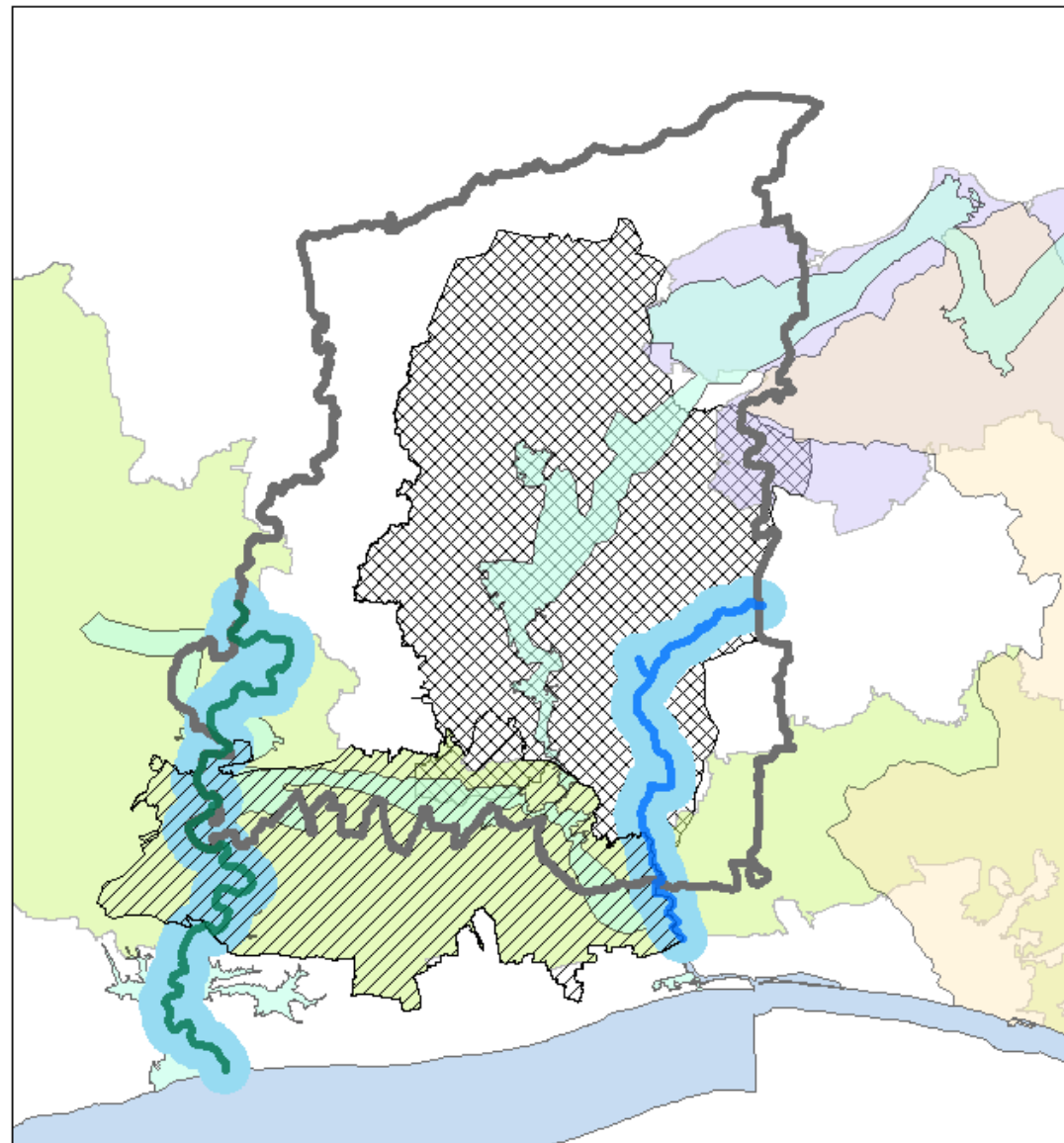
Core areas

Habitat potential











Corridors (also
stepping stones)

<https://www.horsham.gov.uk/climate-and-environment/wilderhorshamdistrict/horsham-district-nature-recovery-networks>

Contains OS data © Crown Copyright and database right 2021



Legend

-  Wilder Horsham District
-  Arun to Adur Farm Cluster
-  Trawling exclusion area
-  Weald to Waves
-  SWT Wilder Ouse project
-  South Downs National Park
-  High Weald AONB
-  Upper Adur Farmers Group
-  Arun project area
-  Adur project area

Data supplied by Sussex Wildlife Trust
Contains public sector information licenced
under the Open Government Licence v.3.0.



Organisational Resilience

“embed the principles of the project throughout the Council”

Staff & Members

- talks/CPD/visits

Relevant strategies/policies



Council owned land





Bespoke advice for landowners/farmers

Community Resilience



Talks

On-site advice

Practical tasks



Schools



Community Groups

Parish/Neighbourhood Council



Visits and advice; often linked to community groups

Workshops in March 2023

- Presentations and break out sessions
- Practical advice
- Share experiences and ideas/networking

Actions

- Wildflower areas
- Distribute wildflower seeds
- No Mow May
- Swift boxes
- Tree planting
- Community orchard
- Report from Biodiversity Records Centre

Nature Recovery Award

Funding up to £5,000 for landowners, community groups, PC/NC . Opens quarterly

WilderHorshamDistrict@sussexwt.org.uk



St Mary's Church, Billingshurst
– changed mowing regime, Swift and
bat boxes & small pond



Friends of Glebe Field Thakeham
- new orchard, hedgerow, bat & bird boxes, wildflower
meadow

March 2023

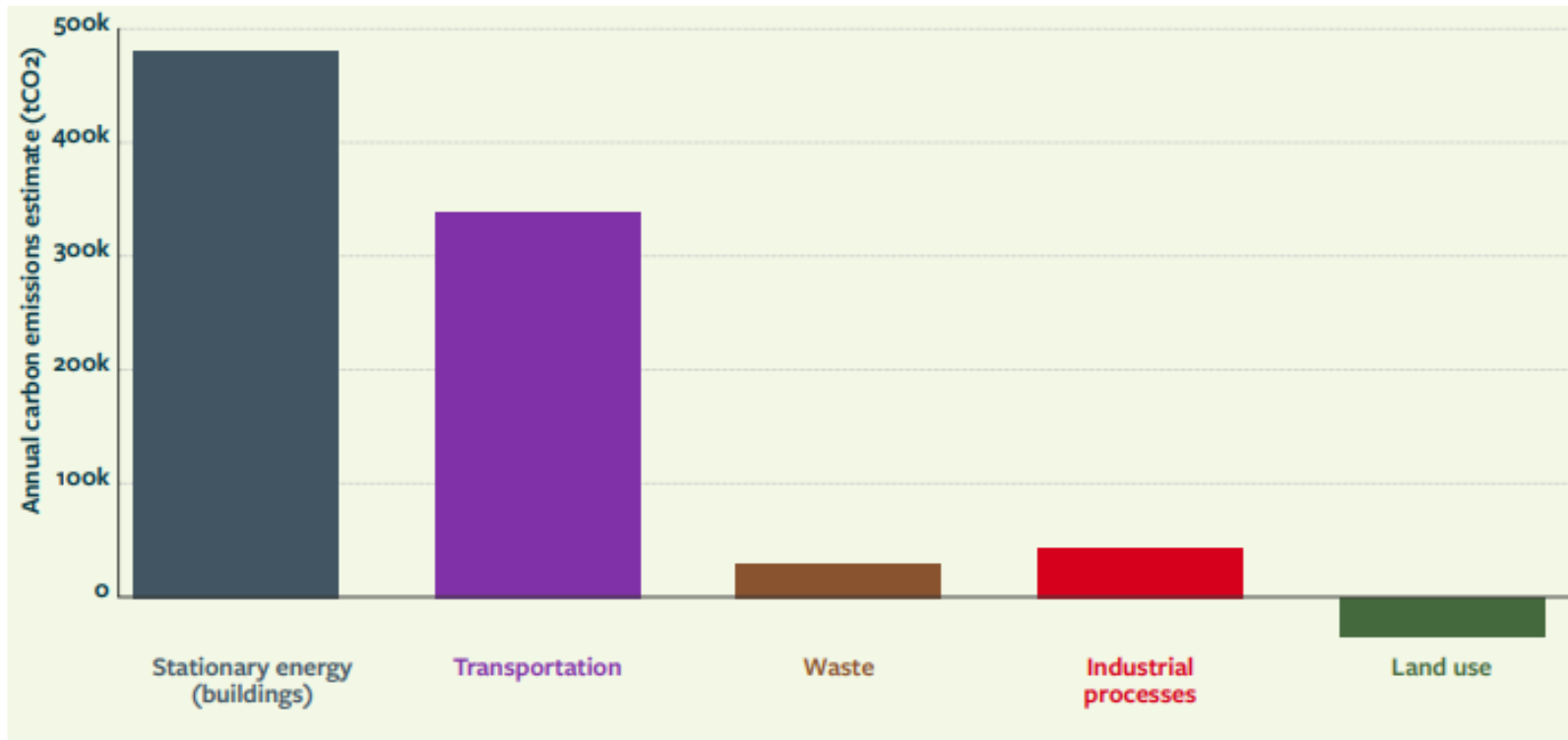
Horsham District's Draft Climate Action Strategy

Towards Carbon Neutrality
and Climate Resilience



www.horsham.gov.uk/climate-and-environment/climate-change-action-strategy

Carbon footprint – the Horsham District



Buildings = 50%; mostly residential

Transport = over 30%; road transport

Industrial and waste smaller but still opportunities to reduce emissions e.g. energy saving

Land use is a carbon sink; links to biodiversity improvements

Carbon neutral by 2050 – incorporates climate resilience

Actions based on carbon hotspots and opportunities - 10 year plan



DELIVERY ROUTES

Strategy cannot be delivered by HDC alone



New and existing buildings use less energy & water



Increase in renewable and low carbon forms of energy generation



Use more sustainable forms of transport and low carbon vehicles



Reuse waste materials and reduce food waste



Improvements for wildlife, more green spaces – store carbon and reduce flooding
Create local food systems

Share your views on the District's Draft Climate Action Strategy



“have
your
say”

Get involved at
www.horsham.gov.uk/climateactionstrategy

Open 26th June

Closes 31st August

Extensive promotion

Targeted engagement
with hard to reach
residents, as well as
businesses - September

Actions that relate to PC/NC

- Support Parish and Neighbourhood Councils in developing their Climate Action Plans and linking community groups with an interest in the environment
- Encourage and support owners of community buildings to retrofit their properties
- High street pop-up events
- Small scale low-carbon, renewable energy generation & storage
- Work with existing community groups to promote a circular economy e.g. repair, refill & increase recycling rates, & to reduce food waste

Parish and Neighbourhood Climate Action Network

- Set up the Network after workshops in 2022
- HDC run three events a year; two online and one in person
- Online portal with resources, share ideas and capture updates
- Several are developing plans/visions
- Actions; information for residents on websites and Parish magazines, repair/refill events, LED lighting, energy surveys, new recycling points

Only 5 Councils have not engaged at all

WATCH THIS SPACE - date in November for an in-person session

Fund supports new projects that reduce carbon emissions and benefit the wider community (38 to date).

Available to community groups/Parish and Neighbourhood Councils



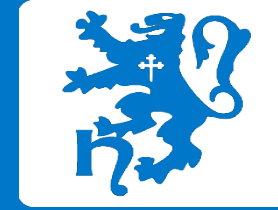
- LED lights (PC & village halls)
- Water butts
- Hot bins for composting
- Bike racks & maintenance workshop (NC)
- Solar panels (village halls)
- Air source heat pumps (PC & village hall)
- Drought resistant garden
- Community orchards
- Rainwater harvesting



<https://www.horsham.gov.uk/climate-and-environment/community-climate-fund>

01403 215156 or email communityclimatefund@horsham.gov.uk

Current round opened 3rd July & closes 13th August



Horsham
District
Council

Local Plan Update

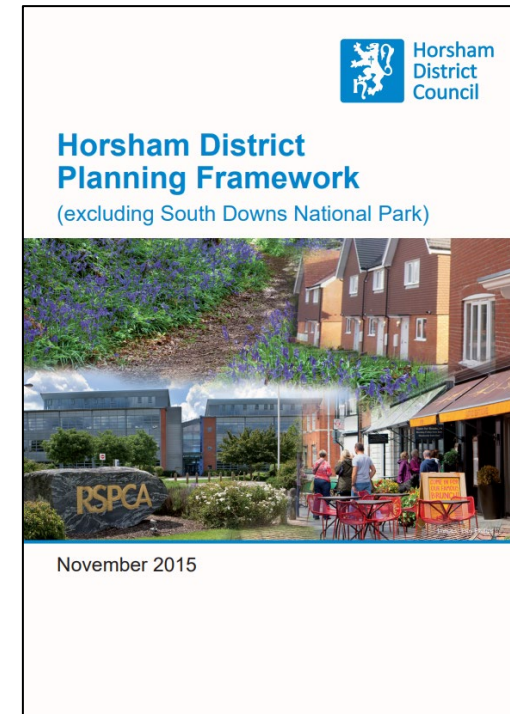
26 July 2023

Introductions

- John Milne – Cabinet Member for Planning and Infrastructure
- Barbara Childs – Director of Place
- Catherine Howe – Head of Strategic Planning

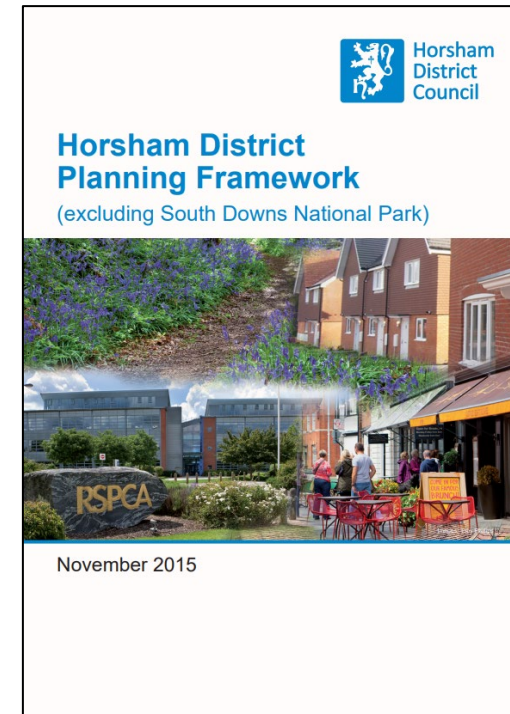
Strategic Planning – Local and Neighbourhood Plans

- Documents which contain a range of policies which together set the development strategy for the District as a whole (local plan) or smaller area (usually a parish).
- Our current plan is called the Horsham District Planning Framework – adopted in November 2015. It sets the framework for Neighbourhood Plans.
- All plans are subject to consultation and independent examination before they are ‘adopted’ or ‘made’



What do plans do?

- Deliver the right development in the right place and the right design
- Ensure we protect, retain and enhance our environment – landscape, heritage, flooding, biodiversity, climate change
- Support economic growth
- Provide new community facilities
- Allocate land for housing and employment, based on identified needs

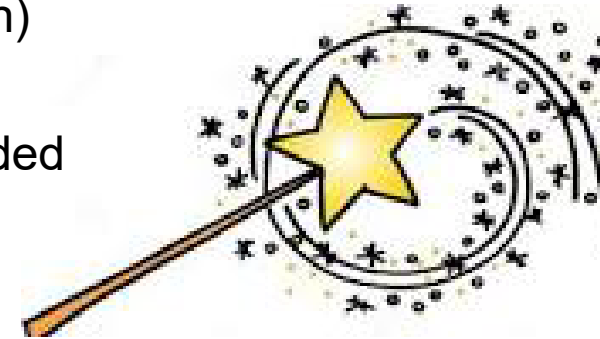


What don't plans do?

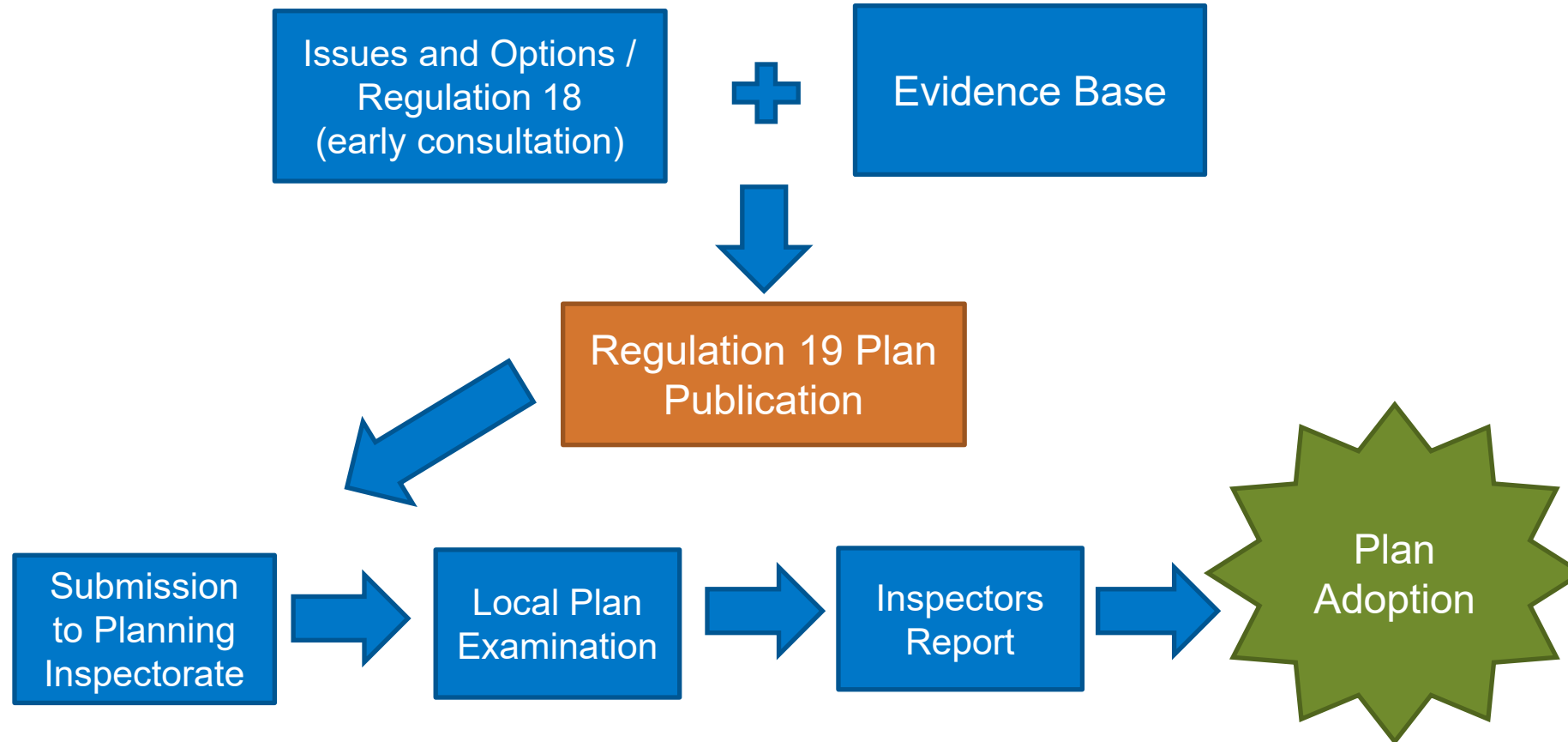
Control non land use activities (crops, home insulation)

Require existing infrastructure deficiencies are upgraded

Cover every single scenario or eventuality!



Plan Preparation Process



The Local Plan – Rules for preparation

- The Local Plan preparation process is set out in legislation
- It is a legal requirement to review local plans every 5 years.
- Be prepared in accordance with national planning policy – set out in the National Planning Policy Framework or NPPF.
- Be based on evidence – what does the District need in the future? What is particularly important / distinctive and needs protection?
- It must deliver ‘sustainable development’ – providing homes (a government priority), jobs, schools, health care, recreation, transport upgrades and environmental protection.
- Housing delivery must meet a five year land supply. Councils are now tested on housing delivery although we have very little control over delivery rates.
- Plans must also be ‘viable’



Revised Local Plan

- Will cover the period to around 2040
- Development and change will happen - desire to build developments to the highest possible standards.
- Delivery of a range of genuinely affordable housing models for local people – social rented, Community Land Trusts
- Climate change mitigation and net zero carbon – higher than national standards
- Deliver opportunities for active travel and reduce the need to make car journeys
- Protect nature corridors and give easy access to local greenspaces

Revised Local Plan

- Starting point for housing is the standard methodology (currently 911 homes each year).
- HDC has ‘exceptional local circumstances’ (water neutrality). The need to deliver water neutral developments limits the number of homes we will be able to deliver particularly in the very short term.
- New local plan will have a target that is below 900 homes a year
- Additional land for housing will still be required – particularly beyond 2031 when current Local and Neighbourhood Plan period ends.

Challenges and Next Steps

- Developers continue to submit speculative applications. HDC cannot demonstrate a five year supply, so schemes that are water neutral are more difficult to resist
- Local plan gives certainty and an ability to better plan for much needed infrastructure
- Further discussion with parishes programmed (September)
 - newer PC Members can learn more about Local Plan
 - understand sites submitted to HDC and feedback local information
- Thereafter – a need to progress to Reg 19 quickly to minimise risk of unplanned speculative development