



Rampion 2
WIND FARM

Rampion 2 update

Project elements now fixed

Second statutory public consultation:
Onshore cable route – potential changes

Project Liaison Group presentation

October 2022

Contents

- 1 Recap of first statutory public consultation

- 2 Fixed changes: Offshore elements

- 3 Fixed changes: Onshore substation site

- 4 Why Rampion 2 even more critical

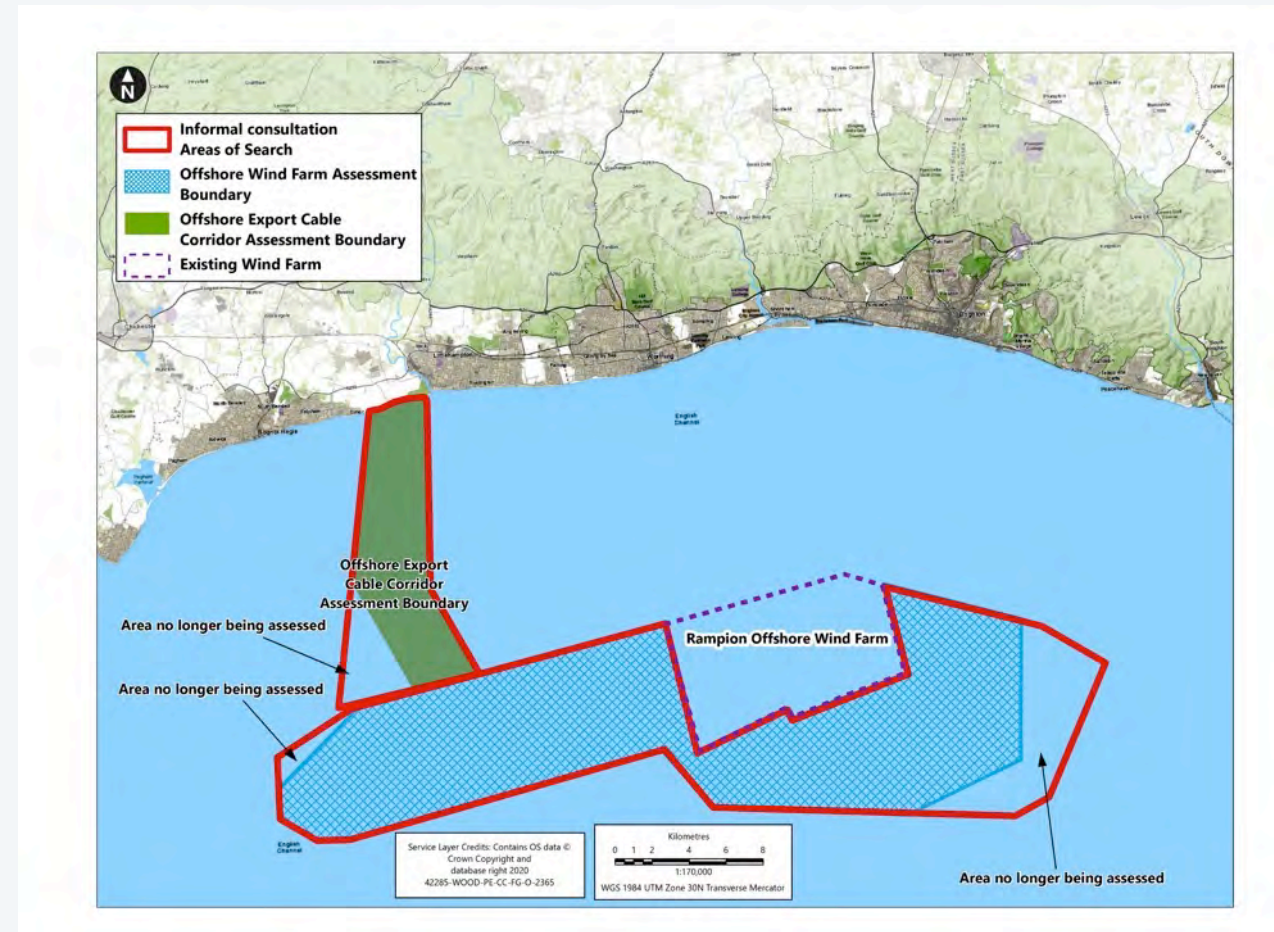
- 5 Second statutory public consultation - Onshore cable route potential changes

- 6 Indicative timetable

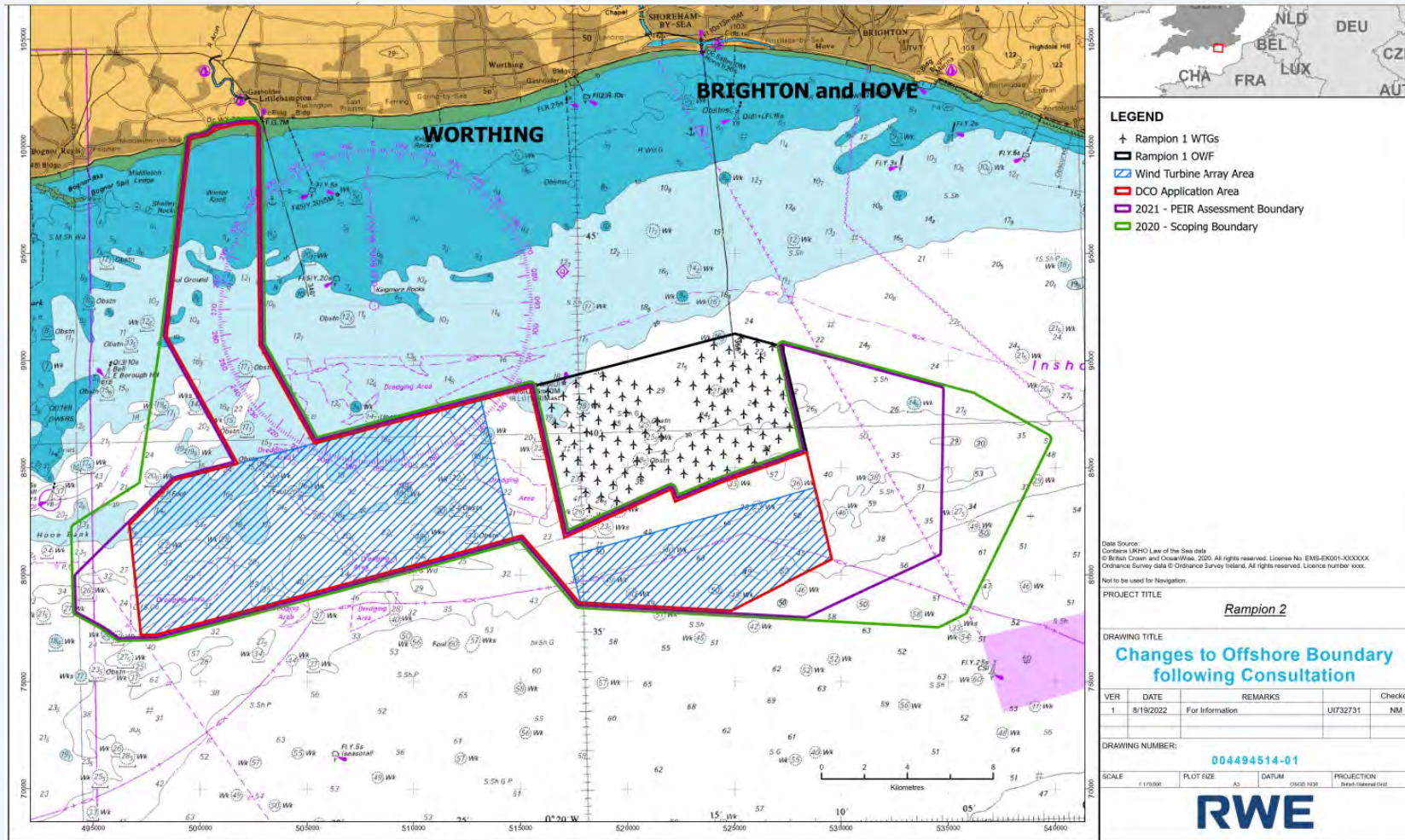
- 7 Q&A

1. First statutory public consultation - recap

- Formal 9-week consultation 14 July – 16 September 2021
- Attracted 12,500 visits to Rampion2.com to view consultation materials
- We identified some missed addresses that didn't receive the promotional leaflet as intended so reopened the consultation again for the same 9-week consultation from 7th February – 11th April 2022
- A Consultation Feedback Summary will be available during next consultation at **rampion2.com**
- Highlights key themes split into four categories: project-wide, onshore, offshore and substation
- Detailed Consultation Report of consultation feedback and our response, forms part of DCO application
- Rampion 2 thanks all those who reviewed our consultation materials and responded to the consultation



2. Fixed changes - offshore elements



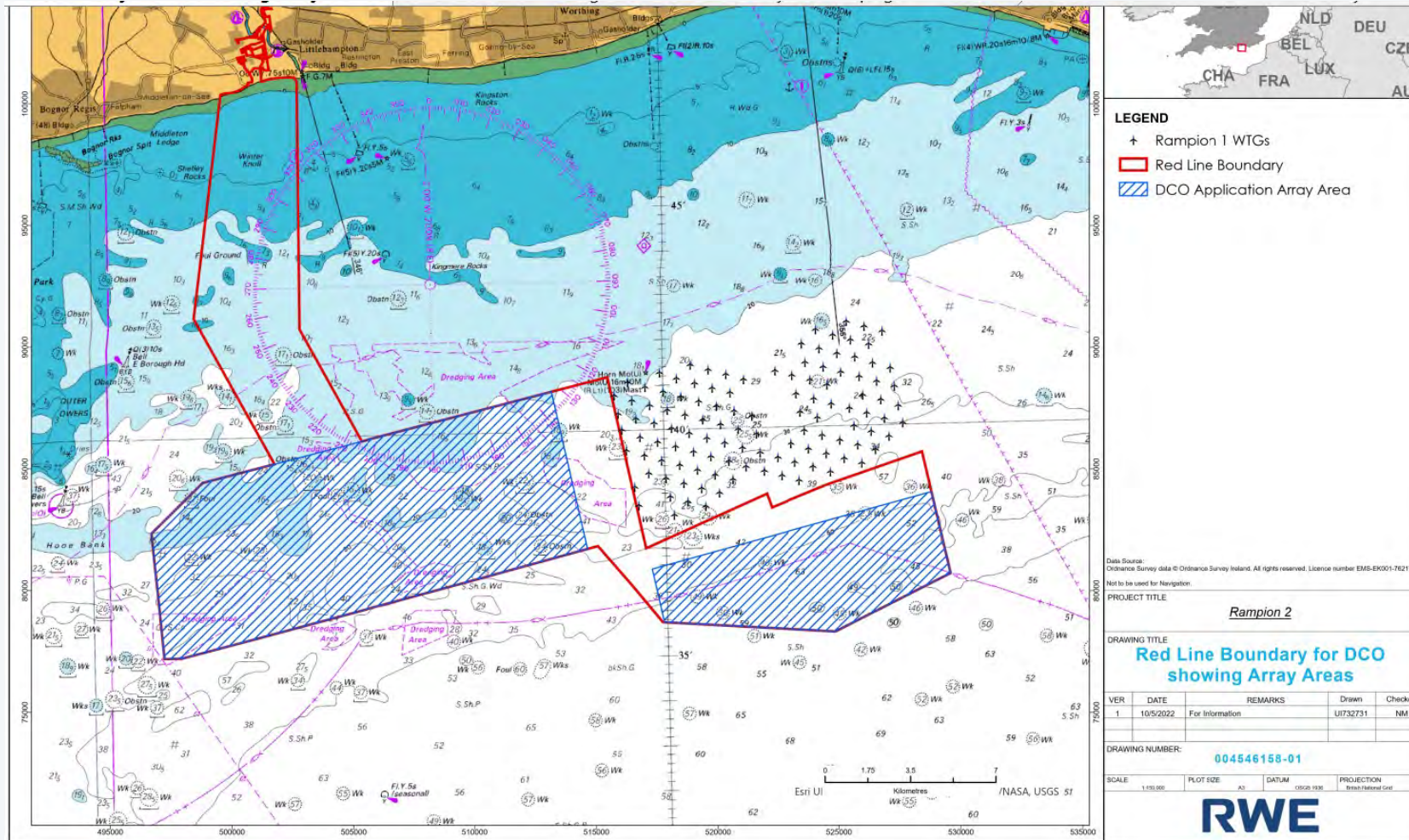
Removed turbine areas from DCO redline boundary

- Eastern area and central area – a large area to the east and southeast of Rampion has been omitted
- Primary concerns from statutory bodies re impact on views from the coast, including SDNP and Heritage Coast (Seven Sisters to Beachy Head) – addressed through 4 “Design Principles”
- Added benefits – new route between TSS and Shoreham Port and further from eastern shipping route
- **Western extent** – Further 10km² omitted
- Mainly driven by navigation and visual impact

New ‘gaps’

- Helicopter Refuge Areas (keep in red line for subsea development e.g. cables)

DCO redline boundary, turbine size & numbers



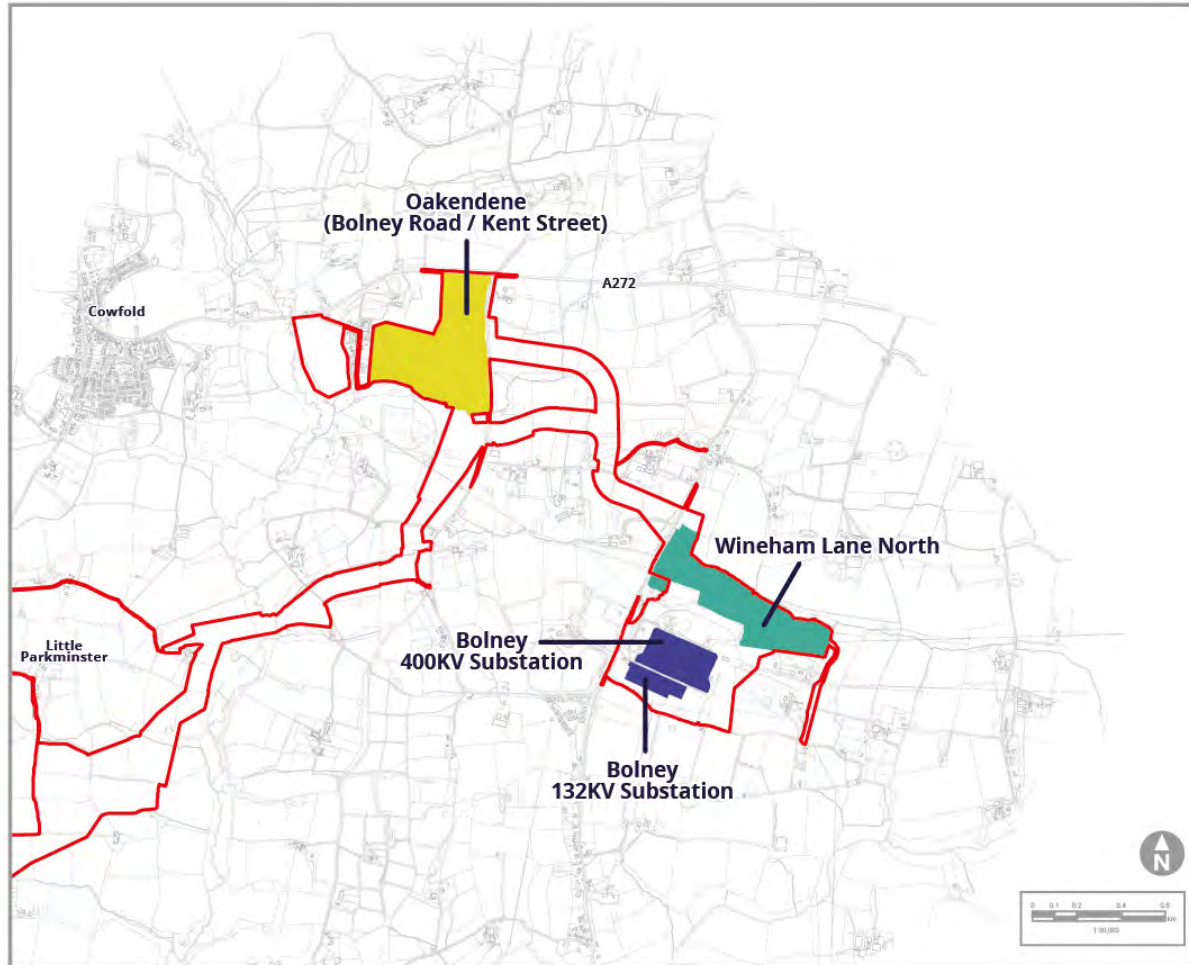
Maximum Scope of redline boundary

- Minimum 8 miles from shore (as Rampion)
- Reminder - can't go further offshore due to shipping lane & TSS
- RLB at Scoping – 315 km²
- RLB at PEIR – 270 km²
- RLB at DCO – 195 km²
- Turbine array area (blue) – 160km² (117km² in West and 43km² in East),

Turbine size and numbers

- Maximum tip height still 325m and maximum blade diameter 295m
- ...to 'futureproof' against likely models available for installation 2027 onwards
- Reduced to a maximum of 90 turbines - 26 fewer than Rampion
- Still capacity to install 1200MW

3. Fixed changes – onshore substation site



- Onshore substation the only permanent above-ground onshore structure for the project
- Wineham Lane North quite constrained in size and shape
- Wineham Lane North attracted more negative feedback from community consultation
- Detailed studies found Bolney Road / Kent Street site better overall from an engineering and environmental perspective
- Bolney Road/Kent Street site selected for onshore substation
- Now named ‘Oakendene’ as it’s near the Oakendene Industrial Estate
- Original cable route options to feed Wineham Lane North site have been omitted
- Cable route options to take the power from our Oakendene Substation Site to the National Grid Substation to connect to the high voltage transmission grid



4. Why Rampion 2 is now even more critical

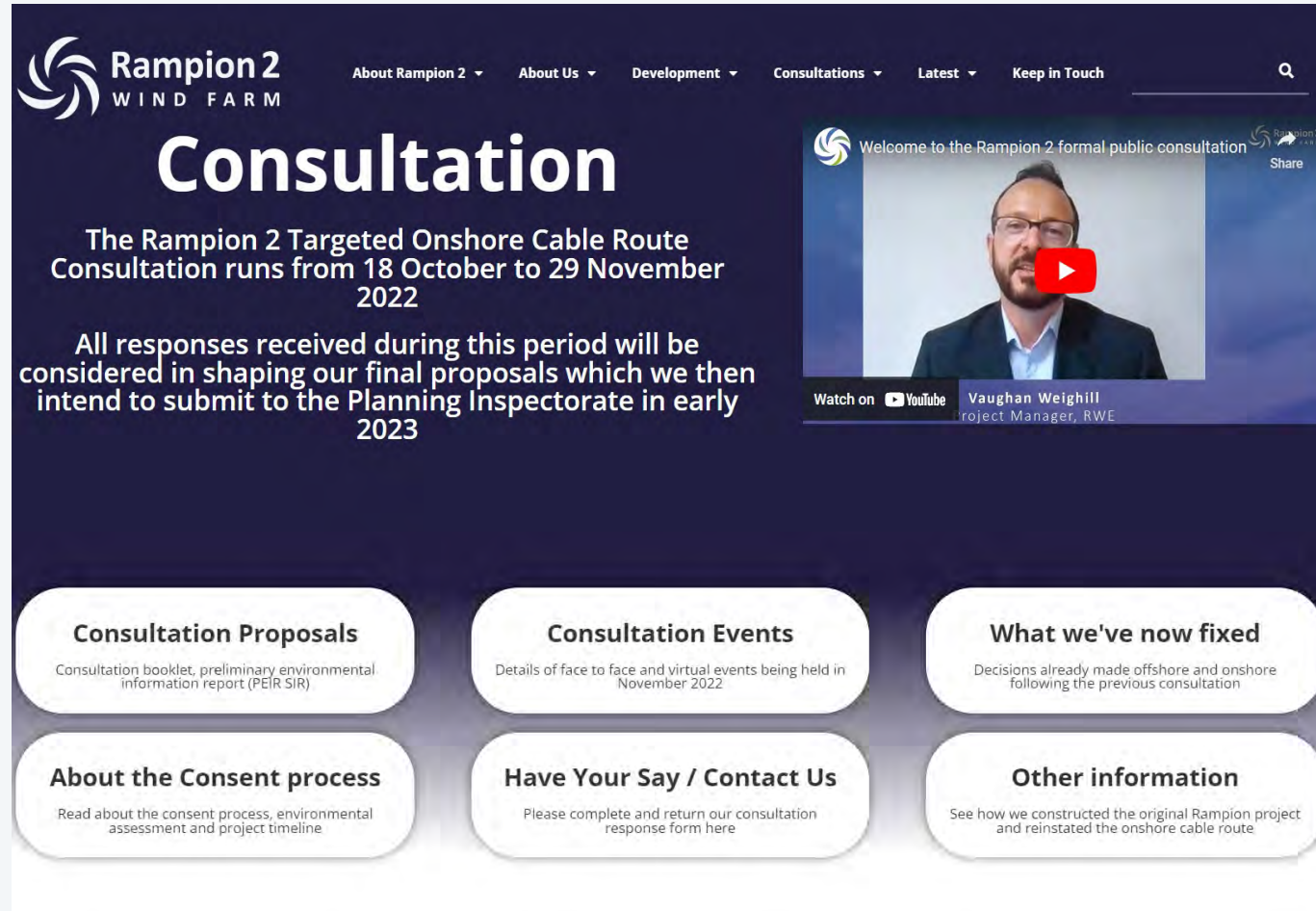
- UK Govt formally declared a **Climate Emergency**
- 68% reduction in GHG emissions by 2030, compared to 1990 levels (Paris Climate Agreement)
- Target to quadruple offshore wind capacity to 40 Gigawatts (GW) by 2030 **now superseded to 50GW by 2030**
- Last coal plant being phased out and increased future needs (hydrogen, heat pumps and Evs)
- 2050 target to make the UK 'Net Zero' carbon emitter
- Russian invasion of Ukraine **threatening energy security and greatly increasing cost of gas and wholesale electricity price**

Rampion 2 would:

- Produce clean, green electricity for the equivalent of **over 1 million homes**
- Save around 1.8 million tonnes of CO₂ every year
- Promote jobs and apprenticeships locally, utilising local businesses and suppliers where possible
- Consider the scope and value for an additional community benefit fund.
- ...all in addition to what Rampion already provides

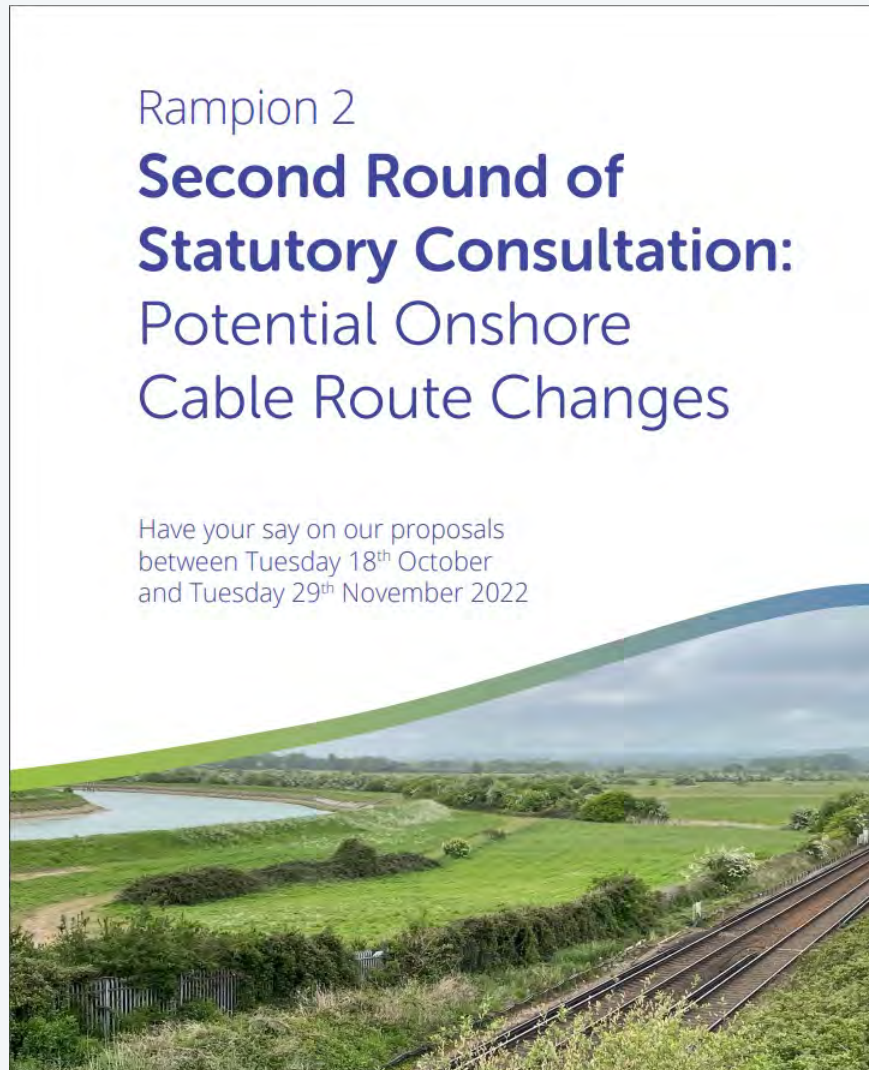
5. Overview of new onshore cable route consultation

- We are consulting on **potential changes** to our onshore cable route as a result of feedback from our previous consultation and ongoing engagement, along with our own engineering & environmental work
- Consultation materials available at rampion2.com
- Public consultation for 6 weeks from **18th October to 29th November 2022**
- Review our **Consultation Materials** in the form of our Consultation Booklet, Work Plans and detailed PEIR SIR (Preliminary Environmental Information Report, Supplementary Information Report)
- Sign up to **4 x Drop-in Events** at different venues along the cable route, or attend our **virtual public forum**
- **Have your say** by providing your feedback using our **Consultation Response Form**
- **Contact us** for anything else at rampion2@rwe.com or Freephone 0800 2800 886
- This consultation does not revisit the fixed elements of the scheme (offshore changes and onshore substation)



The screenshot shows the Rampion 2 Consultation website. The header includes the Rampion 2 WIND FARM logo and navigation links: About Rampion 2, About Us, Development, Consultations, Latest, and Keep in Touch. The main heading is "Consultation". Below it, the text states: "The Rampion 2 Targeted Onshore Cable Route Consultation runs from 18 October to 29 November 2022". A video player shows a man speaking, with a caption: "Welcome to the Rampion 2 formal public consultation". Below the video, it says: "All responses received during this period will be considered in shaping our final proposals which we then intend to submit to the Planning Inspectorate in early 2023". The website features six main sections: "Consultation Proposals" (Consultation booklet, preliminary environmental information report (PEIR SIR)), "Consultation Events" (Details of face to face and virtual events being held in November 2022), "What we've now fixed" (Decisions already made offshore and onshore following the previous consultation), "About the Consent process" (Read about the consent process, environmental assessment and project timeline), "Have Your Say / Contact Us" (Please complete and return our consultation response form here), and "Other information" (See how we constructed the original Rampion project and reinstated the onshore cable route).

Consultation proposals



Potential changes

- ACRs – Alternative Cable Routes
- LACRs – Long Alternative Cable Routes
- MRs – Modified Routes
- TCs – Trenchless Crossings
- AAs – Alternative Accesses

Consultation booklet

- Review our onshore cable route potential changes with maps, descriptions and potential environmental impacts
- Use our interactive overview map to select the cable route area of most interest to you
- Each cable route area has an overview map with sub areas, so you can zoom into the area of most interest to you

PEIR SIR

- Discover more in-depth information of our Environmental Assessment available in the **PEIR SIR** (Preliminary Environmental Information Report, Supplementary Information Report)

Interactive overview map

Contents

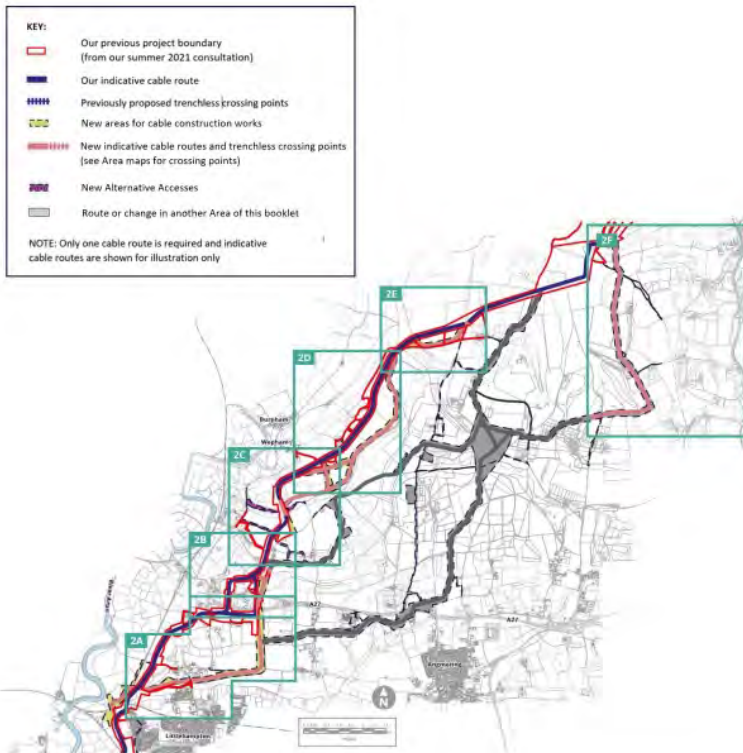
Introduction to this Consultation	02
Our cable route areas (please refer to the map below)	
Area 1: Climping Beach to Lyminster	08
Area 2: Lyminster to Angmering Park	14
Area 3: Crossbush to Sullington Hill (Central Route)	26
Area 4: Lyminster to Sullington Hill (Modified Route)	34
Area 5: West and North of Washington	50
Area 6: Wiston to Kings Lane	56
Area 7: Substation Approach	66
How to have your say	71



Example of Area 2 in Consultation Booklet

Our Environmental Assessment of Lyminster to Angmering Park

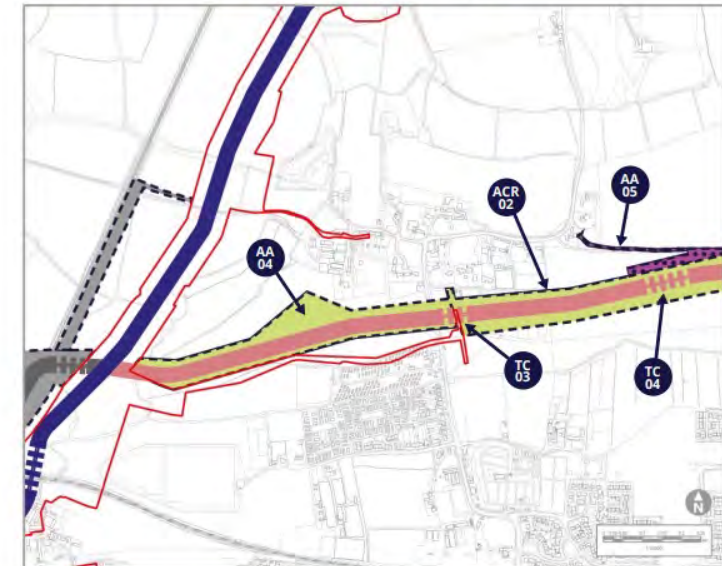
On the following pages you can read about our preliminary assessment of proposed changes in Area 2. We don't believe that introducing these changes is likely to change the overall conclusions of our PEIR from summer 2021. You can read more about our consideration of these potential changes in our PEIR SIR at www.rampion2.com/consultation. Just look for the relevant ACR, MR, AA or TC reference.



We've split this Area into 5 smaller Areas 2a to 2e. You can use the map below to figure out where you are most interested in and find out more on the following pages

- Left: Overview map showing 5 sub areas
- Right: Large scale map of sub area 2a, with description of potential changes and potential environmental impacts

Area 2a: South of Lyminster



Alternative Cable Route ACR-02 & Alternative Access AA-04

ACR-02 has been introduced to avoid potential archaeological interests, specific agricultural issues and difficult or constrained working areas on our existing proposed route. AA-04 has been introduced to stay further away from Brookside Caravan Park when accessing our proposed cable route options to the west. AA-04 would sit in a similar area to ACR-02 from the west to the A284. AA-04 would be taken forward if ACR-02 is not progressed.

Alternative Access AA-05

AA-05 would provide construction and operational access from the A284 Lyminster Road to ACR-02

Trenchless Crossings TC-03 and TC-04

For ACR-02 we would need trenchless crossings TC-03, under the A284, and TC-04, under the proposed Lyminster bypass, which is a separate project expected to complete before Rampion 2.

Potential Environmental Impacts

AA-04, AA-05, TC-03 and TC-04, along with the western part of ACR-02, have all been considered together. These would involve crossing public rights of way, bridleways, hedgerows, recreational paddocks and be in the vicinity of residential buildings. These are new receptors compared to those already identified in our 2021 consultation. However, no changes to impacts previously identified are anticipated.

How we're promoting the consultation

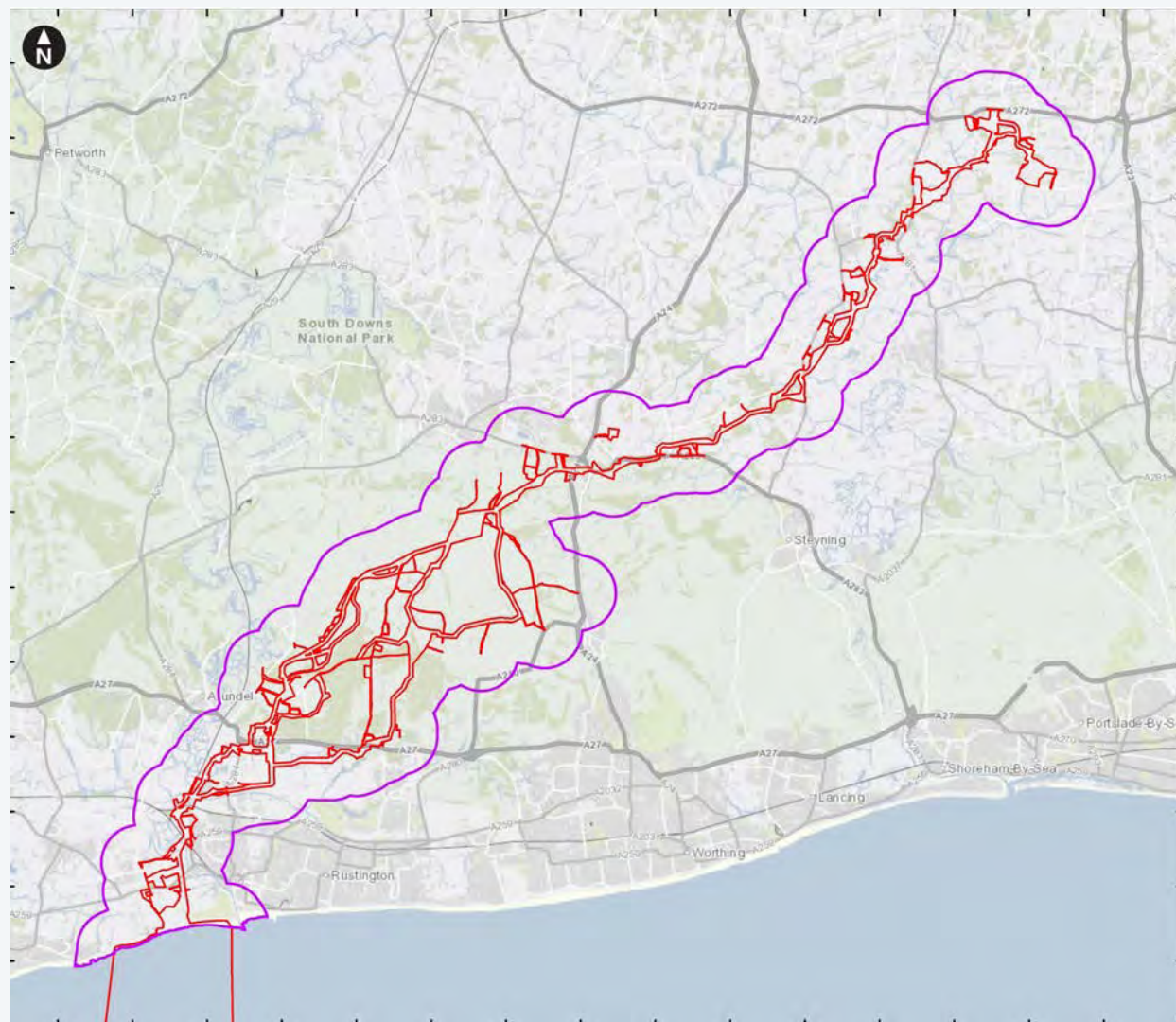
Promoting this targeted public consultation focused on potential changes to cable route only

- Flyer - posted to addresses on the cable route and a 1km buffer zone around it
- Email blast – to stakeholder groups and PLG reps with an image and text to share on your Facebooks / other Online Social Media
- Posters - sending posters to Community Groups (Paula will email you to see if you can help) and putting them up on unlocked Community Notice Boards, Libraries and Village Halls
- News release - to local media on 18th October

KEY:

Red = PEIR Boundary

Purple = Consultation Zone



We want to hear from you

The consultation has been designed to ensure that people have the opportunity to express their views and contribute to the evolving design of the Rampion 2 project.

We encourage anyone who lives, works or visits the areas where our potential changes are located, to give their views on our **Consultation Response Form**

- Submit online at rampion2.com
- Download, complete and send by email to rampion2@rwe.com
- Send your Form or comments to FREEPOST: RAMPION 2

All feedback will be considered alongside the feedback already received on our original cable route proposals.

Your feedback will help us reach a final decision on which options to adopt for our final DCO application. Only one cable route will be taken to DCO application.

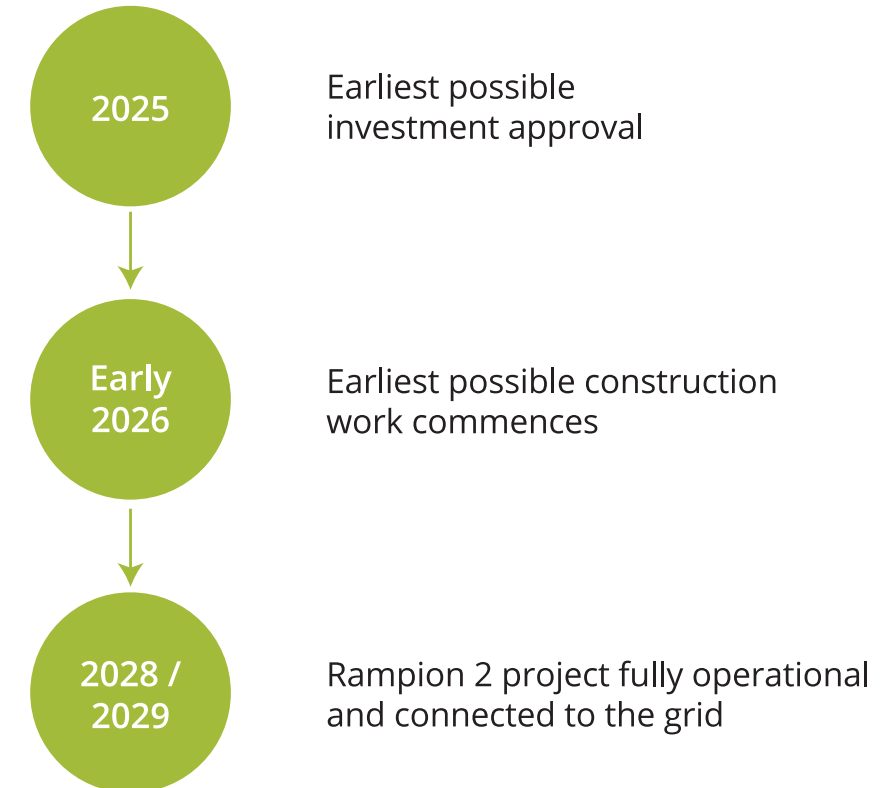
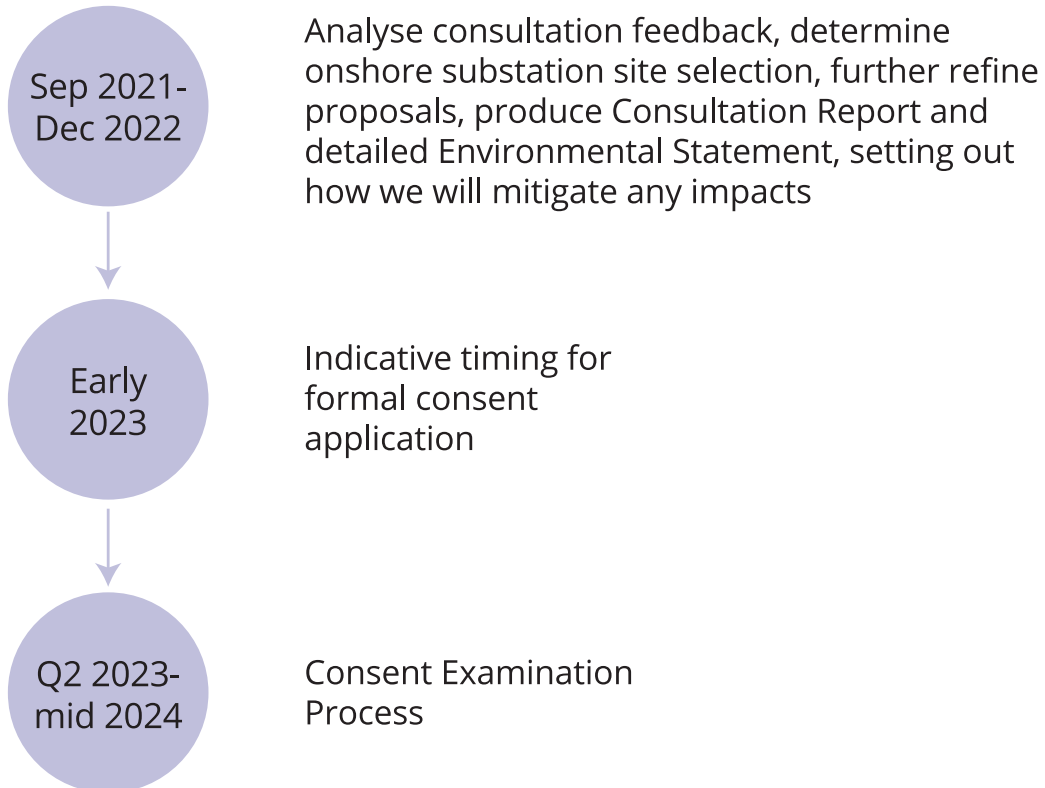
Our Consultation Report which forms part of the DCO application, will explain how comments received have been considered and taken into account.



6. Indicative timeline*

*Subject to COVID-19 restrictions and other factors

Should consent be awarded in 2024...



7. Q & A



Vaughan Weighill

Project Manager

vaughan.weighill@rwe.com



Chris Tomlinson

Stakeholder Manager

chris.tomlinson.extern@rwe.com



Rob Gully

Senior Consents Manager

rob.gully@rwe.com

Contact Us

View our draft proposals at rampion2.com

Have your say

Please complete our Consultation Response Form at:
rampion2.com/consultation

Consultation responses will also be accepted via email at rampion2@rwe.com or post to FREEPOST: RAMPION 2. The email or letter will need to be clearly marked, 'Consultation Response' and include the sender's post code.

Phone or email

For questions or points of clarification about the project or consultation:

Email us at rampion2@rwe.com

Call us on our Freephone number 0800 2800 886

Join a public forum

Should you wish to listen to a presentation and ask questions to members of the Project Team, please visit:

Rampion2.com/consultation/events



Rampion 2
WIND FARM