

Horsham
District
Council

Water Neutrality and Local Plan update

30 November 2022

Introduction

- Water Neutrality Update
- Local Plan Update
- Next Steps



Horsham
District
Council

Water Neutrality

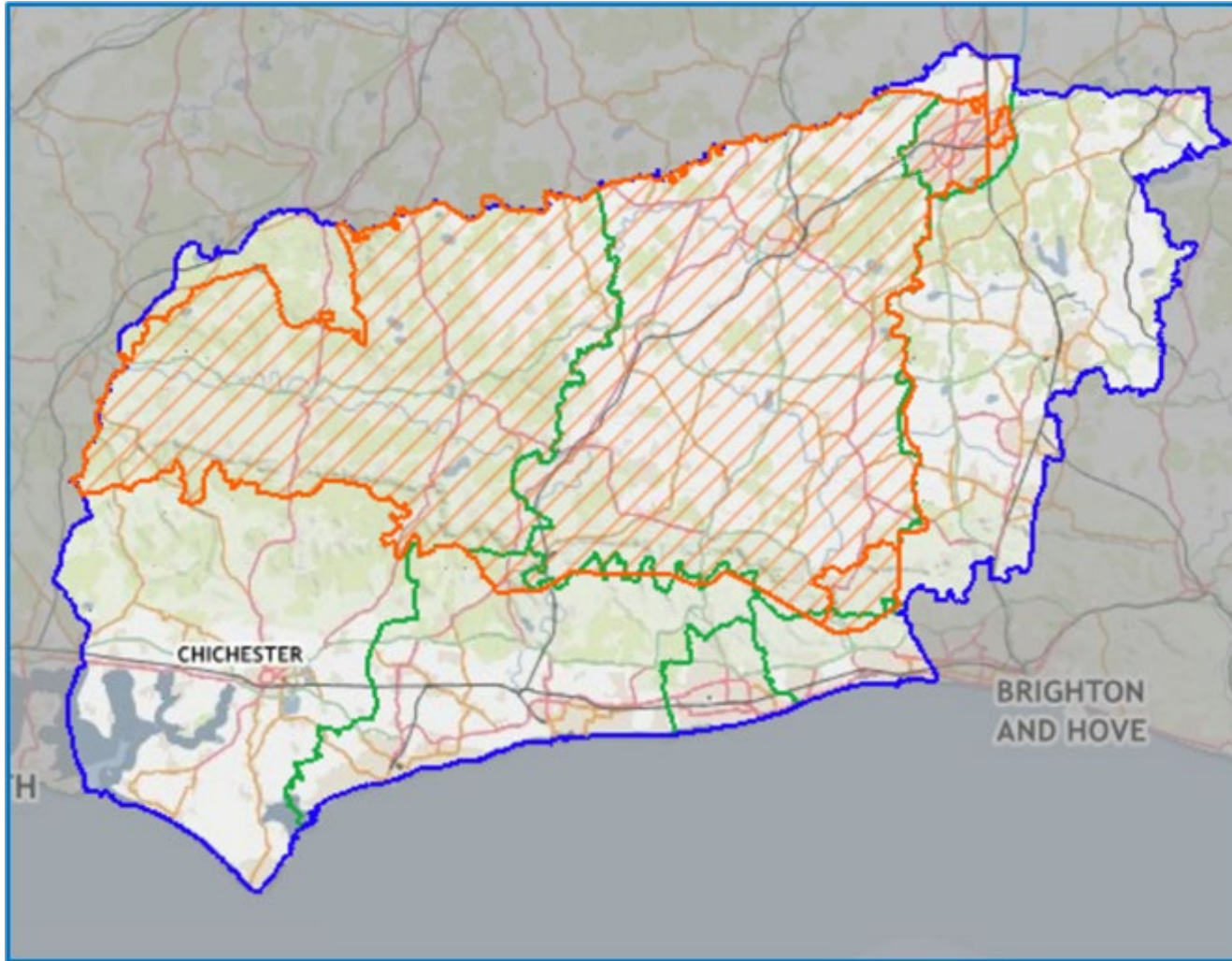
Water Neutrality

- Water abstraction is having an adverse effect on the protected habitats of the Arun Valley
- Development must not add to this impact
- One way of avoiding impact is for development to be Water Neutral – including Local Plans, Neighbourhood Plans and Planning Applications

The Sussex North Water Supply Zone



Horsham
District
Council

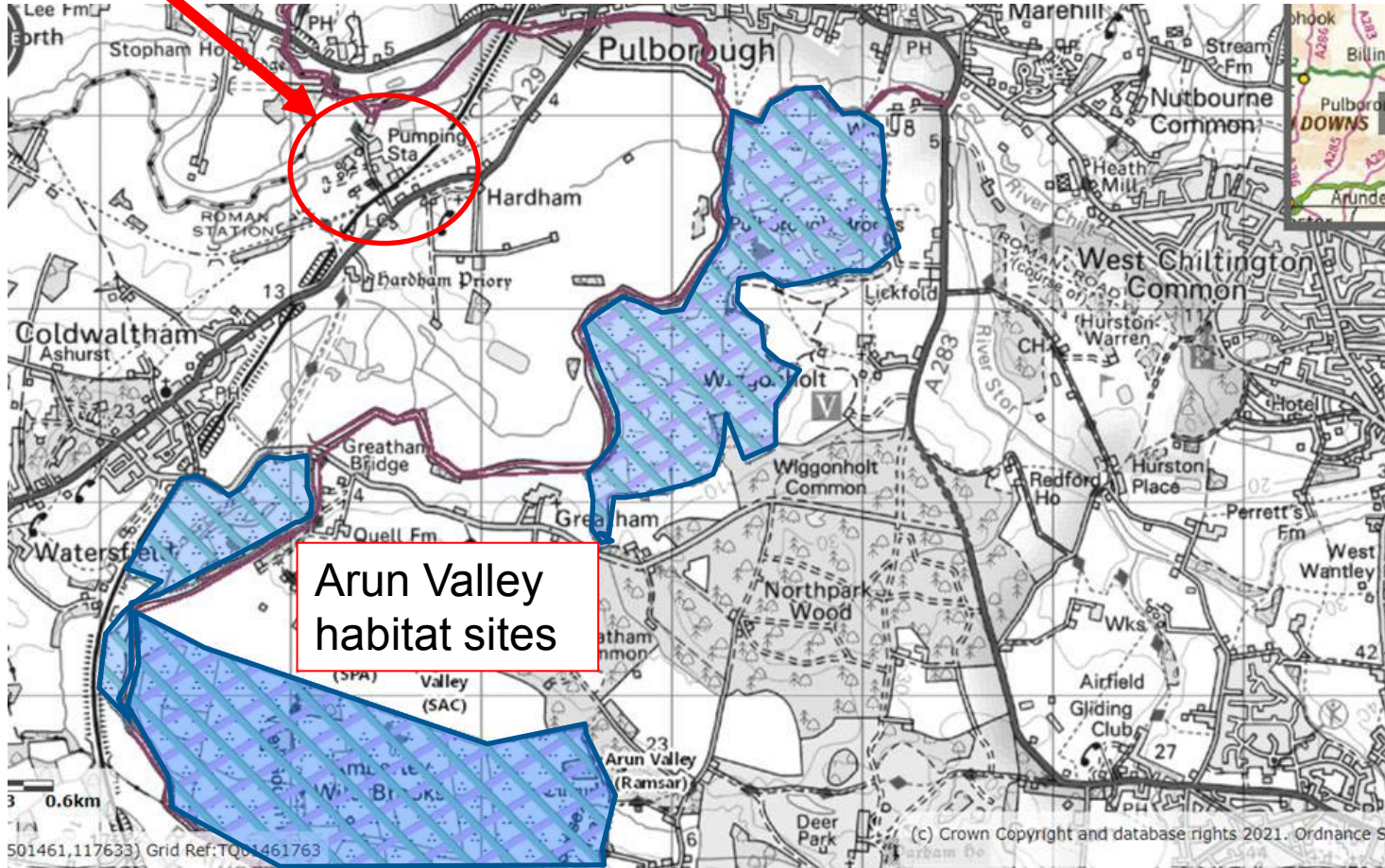


The Arun Valley SPA, SAC and Ramsar sites

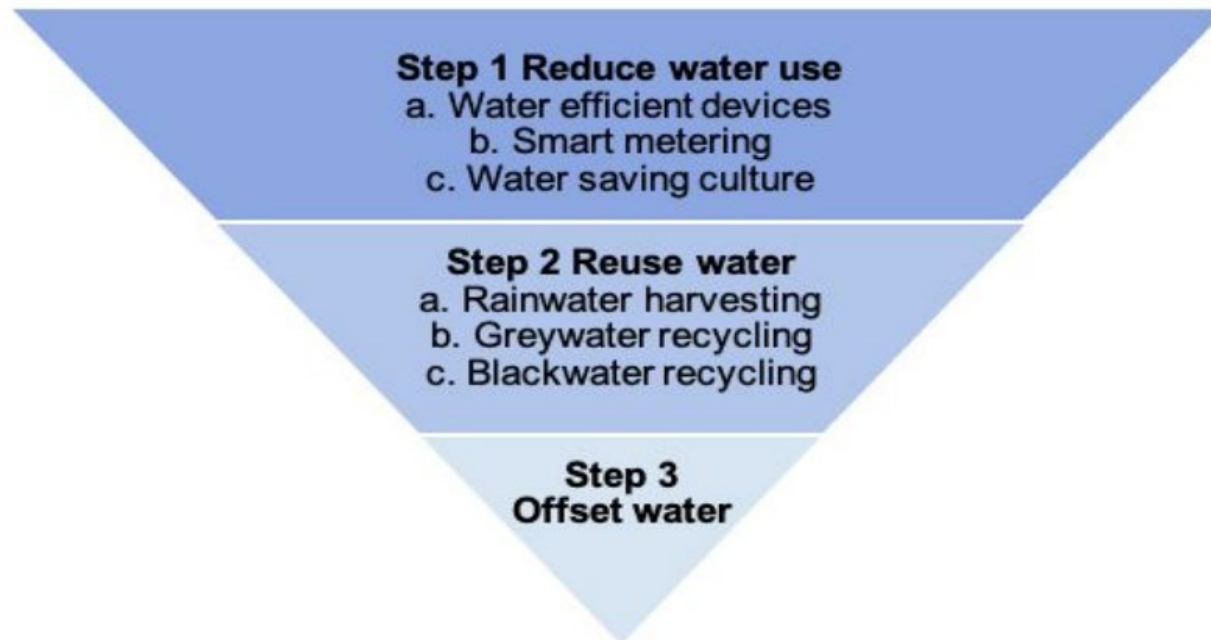


Horsham District Council

All of Sussex North Water Supply comes from the abstraction point at Hardham, just south of Pulborough

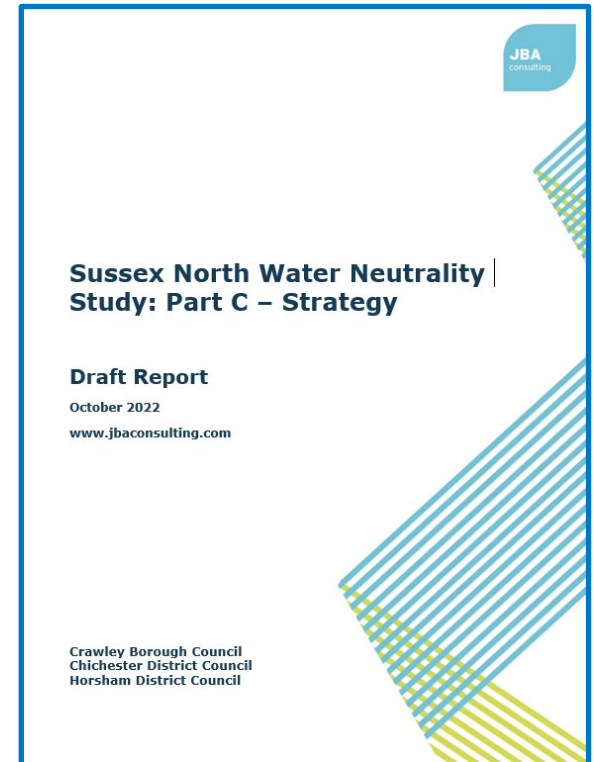


How do we achieve Water Neutrality?



Water Neutrality Mitigation Strategy

- Part A – How much additional water demand might each local plan generate?
- Part B looked at the cumulative demand across the whole Water Resource Zone (WRZ)
- Part C- Strategic solutions and cost to deliver water neutral local plans



Water Neutrality Study – Part C – The Strategy

- Local Plan Policies that set a high water efficiency standard
 - ✓ 85 litres per person per day for new dwellings
 - ✓ Highest achievable 'BREEAM' score for non-household uses
- Offsetting
 - ✓ 87.7% - Actions to be undertaken by Southern Water (household visits, leaks, new reservoir)
 - ✓ Local Authority scheme – flow restrictors, rainwater harvesting on commercial buildings

The amount of water available for offsetting in the short – medium term is low.

You will be able to find the Part C study on this page on our website:

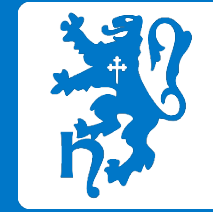
- <https://www.horsham.gov.uk/planning/local-plan/local-plan-review-evidence-base>

What does this mean?

- This is a 'staging post' -we can start to progress our Local Plans and Neighbourhood Plans

BUT

- The mitigation strategy needs to be supported by an implementation scheme.
- No change to the existing position for planning applications – they must still demonstrate water neutrality on a case by case basis.

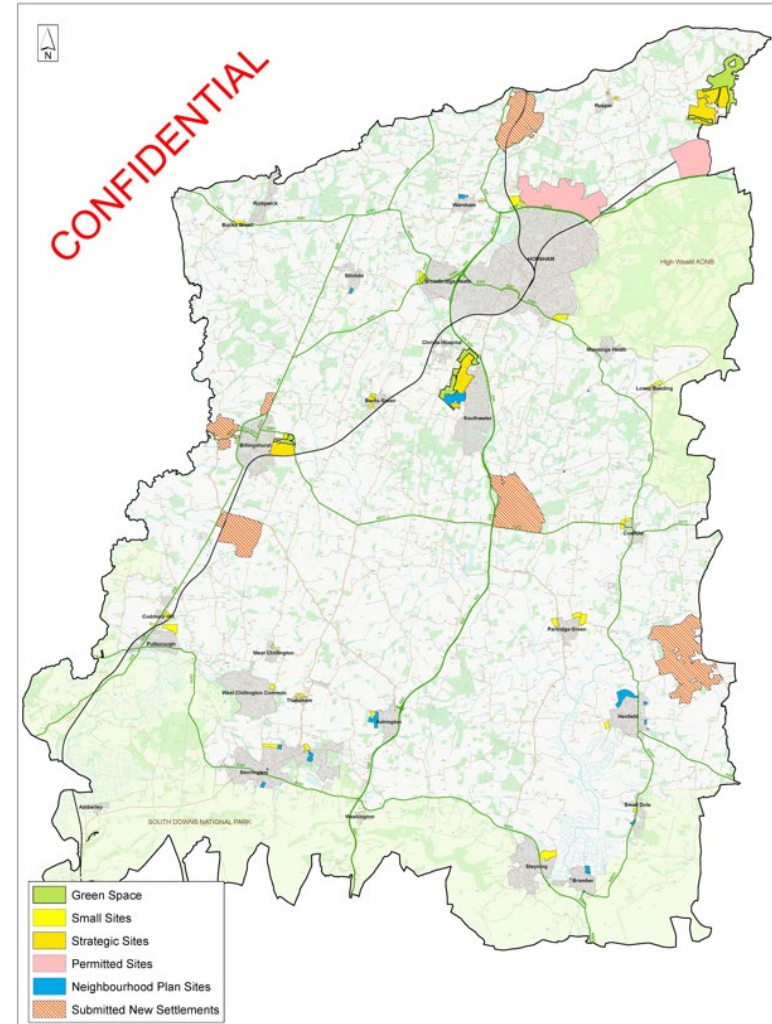


Horsham
District
Council

Local Plan update

Local Plan- Before Water Neutrality

- NPPF & National Planning Guidance set the 'rules' for Local Plan preparation
- Evidence base
- Standard Housing Methodology
- Duty to Co-operate
- Relatively unconstrained
- What sites are most sustainable?
- 1100 homes target



All change?

- The NPPF requirements remain as per 2021 (so far!)
- We still need to deliver homes for local people, in the right places – including affordable homes.
- Need to provide opportunities for people to live and work locally
- Development – still a difficult decision to be make.
- Increased environmental focus: climate, biodiversity

Water Neutrality – Local Plan implications

- The ability for new sites to come forward in years 1-5 of the plan is low. (Lack of existing sites and lack of water)
- HDC is potentially more able to deliver homes mid to longer term.
- This is still capped by the market and the amount of water offsetting which takes place.

Revised Local Plan

- Average plan target of 800 homes per year
- Stepped trajectory
- Years 1-5: 600 homes target from sites which already have permission (e.g. North Horsham, Novartis, Neighbourhood Plans)
- Potential to increase delivery to thereafter.
- Subject to review – will Southern Water measures happen when they say they will? Will other technical solutions come forward?

Next Steps

- Consideration of draft Regulation 19 Local Plan in December 2022.
- Council meeting January 2023
- Regulation 19 Consultation 27 January 2023 to 10 March 2023
- HALC event – provisionally booked for 20 January. Details to follow